

CONSTRUCTION Tufting 5/64" cut pile
STRUCTURE Tufté 5/64" velours
STRUKTUR Getuftet 5/64" Velours
STRUCTUUR Getuft 5/64" velours

PILE MATERIAL 100% PA 6 IMPREL®
COMPOSITION DU VELOURS
POLMATERIAL
POOLMATERIAAL

PRIMARY BACKING Non woven PES
SUPPORT Non tissé
TRÄGERMATERIAL Vlies
TUFTDOEK Felt

SECONDARY BACKING Action Back or
DOSSIER Ultratex
RÜCKEN
TAPIJTRUG

PILE WEIGHT Ca. 630 gr/m²
POIDS DU VELOURS
POLEINSATZGEWICHT
POOLGEWICHT

TOTAL WEIGHT Ca. 1.650 gr/m² (AB)
POIDS TOTAL Ca. 1.700 gr/m² (UX)
GESAMTGEWICHT
TOTAAL GEWICHT

PILE HEIGHT Ca. 5 mm
EPAISSEUR DU VELOURS
POLHÖHE
POOLHOOGTE

TOTAL HEIGHT Ca. 7 mm
EPAISSEUR TOTAL
GESAMTHÖHE
TOTALE DIKTE

TUFT DENSITY Ca. 378 000/m²
NOMBRES DE POINTS
NOPPENZAHL
AANTAL PUNTEN

PILE DENSITY Ca. 0.098 g/cm³
DENSITÉ DU VELOURS
POLROHDICHTTE
POOLDICHTHEID

CLASSIFICATION EN 1307
CLASSEMENT 32 - LC2 (AB)
KLASSIFIKATION 32 - LC3 (UX)
CLASSIFICATIE

UPEC U3 P3 E1 C0 only on AB
CHAMBORD AB Certification CSTB: 10/265

CASTOR CHAIR SUITABILITY EN 985
CHAISE À ROULETTES A: intensive use
STUHLROLLENEIGNUNG
ROLSTOELGESCHIKTHEID

STAIR SUITABILITY EN 1963
ESCALIERS A: intensive use
TREPPENEIGNUNG
TRAPPENGESCHIKTHEID

PERMANENTLY ANTISTATIC ISO 6356
ANTISTATIQUE PERMANENT ≤ 2 kV
PERMANENT ANTISTATISCH
PERMANENT ANTISTATISCH

IMPACT NOISE RATING ISO 140-8
ISOLATION PHONIQUE ca. 24 dB ΔLw (AB)
TRITTSCHALLVERBESSERUNG ca. 29 dB ΔLw (UX)
GELUIDSISOLATIE

SOUND ABSORPTION ISO 354
ABSORPTION PHONIQUE 0.20 αw (AB)
SCHALLABSORPTIONSGRAD 0.30 αw (UX)
GELUIDSABSORPTIE

THERMAL RESISTANCE ISO 8302
RÉSISTANCE THERMIQUE 0.13 m² K/W (AB)
WÄRMEDURCHLASSWIDERSTAND 0.15 m² K/W (UX)
WARMTEDOORLAATWEERSTAND

FASTNESS TO LIGHT ISO 105-B02
SOLIDITÉ A LA LUMIÈRE ≥ 5-6
LICHTECHTHEIT
LICHTECHTHEID

COLOUR FASTNESS TO WATER EN ISO 105-E01
SOLIDITÉ À L'EAU ≥ 4-5
WASSERECHEITHEIT
WATERECHTHEID

FIRE RESISTANCE EN 13501-1
COMPORTEMENT AU FEU Action Back: Bfl-s1 if glued
BRENNVERHALTEN UX: Cfl-s1
BRANDGEDRAG

RUBBING FASTNESS EN ISO 105-X12
SOLIDITÉ AU FROTTEMENT ≥ 4
REIBECHTHEIT
WRIJFECHTHEID

NUMBER OF COLOURS 8
NOMBRES DE COULEURS
ANZAHL FARBEN
AANTAL KLEUREN

WIDTH EN ISO 3018
LARGEUR ca. 400 cm
BREITE
BREEDTE



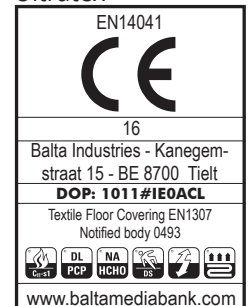
Action Back



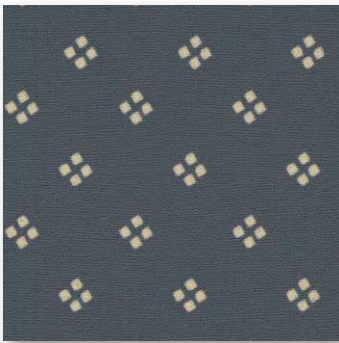
UPEC
—CSTB—



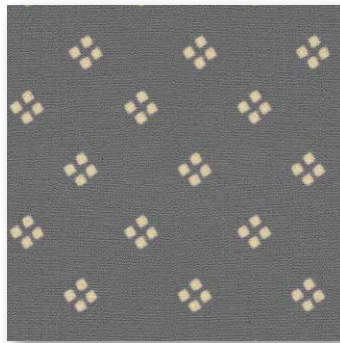
Ultratex



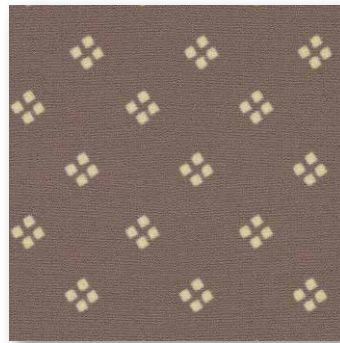
chambord AB/UX



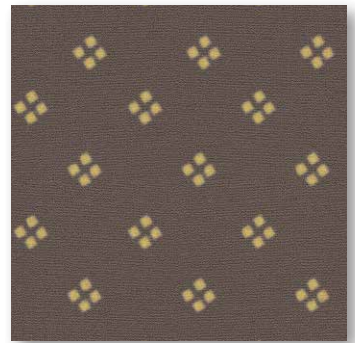
▲ 197



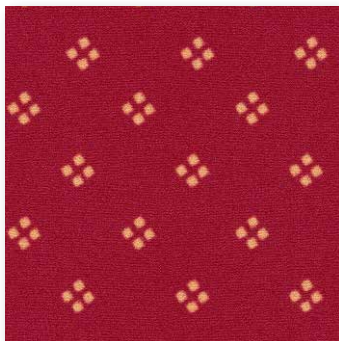
▲ 193



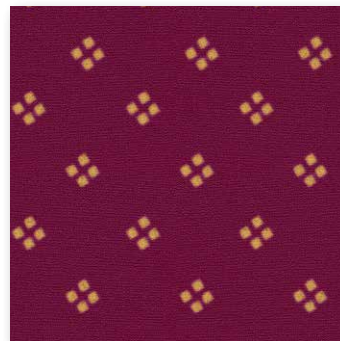
▲ 44



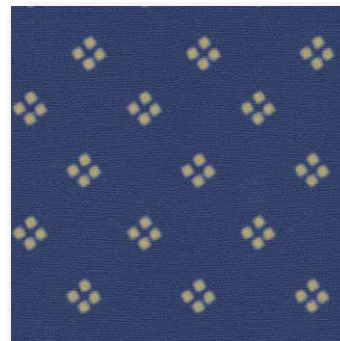
▲ 49



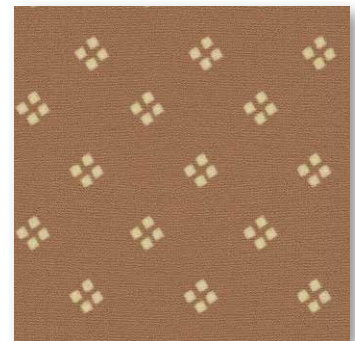
▲ 10



▲ 17



▲ 77



▲ 55

↔ ca. 8 cm ⇕ ca. 8 cm

 **arc edition**
performance flooring